

# SPE



## Industrial Wall Fans

# Industrial Wall Fan SPE

## Features & Benefits



The SPE wall mounted extract models are high performance units comprising an internal aluminium grille, adjustable wall sleeve, plate axial fan and air operated external all weather louvre, designed to provide powerful extract from demanding light commercial applications such as gymnasiums and squash courts.

- Axial impeller, wall sleeve, external louvre & internal grille.
- Three standard sizes, 350mm, 400mm and 450mm.
- Air volume flow rates of up to 1.55m<sup>3</sup>/sec.
- Highly efficient, lightweight induction motors with Class F Insulation.
- Motors fitted with thermal overload protection.
- Suitable for operating temperatures of 50°C with speed controllers & 70°C fixed speed.
- Sealed for life ball bearings to operate at any angle.
- Fully speed controllable.
- Extensive stock range available.
- IP55 rated terminal box.

### Features & Benefits

**Aesthetic** – A stylish design comprising internal aluminium louvre grille in a white epoxy powder coated finish complements the external all weather louvre shutters.

**Reliability** – Motors have sealed for life bearings.

**Motors** – These are protected to IP55 which means they are highly resistant to dust and water ingress.

**Mounting** – Suitable for wall mounting.

**Flexible performance** - Adjustable pitch aerodynamic impellers allow easy site adjustment of the impeller from factory set maximum pitch angles if required.

**Cost effective** – Very efficient for moving high volumes of air at relatively low pressures.

**Speed controllable** – Each fan is suitable for speed control with an electronic controller, which means the airflow can be altered to suit site conditions.

**Safety** – All motors are fitted with integral 'Thermal overload protection' preventing the motor from overheating.

**Easy to install** – Fans are supplied with an integral IP55 terminal box and motor side guard, which allows the fan to be positioned conveniently to incoming electrical inputs.

**Adaptable** – Maximum ambient operating temperatures of up to 70°C fixed speed and 50°C when used with a speed controller.

**Effective** - A pressed inlet with motor side wire guard provides extra rigidity, a smoother airflow and enhanced performance characteristics.

**Adjustable** – The telescopic wall sleeve in galvanised sheet steel is adjustable between 230mm and 390mm and fits through most wall thicknesses and has a cut out to allow concealed cable entry.

**Extensive stock range available** – Selection issues minimized due to the wide range of sizes, motors and controls options.

**Tested to the very latest standards** – SPE units are tested to ISO 5801:1997 (airside performance) and to BS 848 Pt 2:1985 (sound performance) meaning accurate, up to date information on performance and noise data that can be relied upon.

**Quality assurance** – All units are designed and manufactured with procedures as defined in BS EN ISO 9001: 2000.

**Accessories** – Speed controllers.

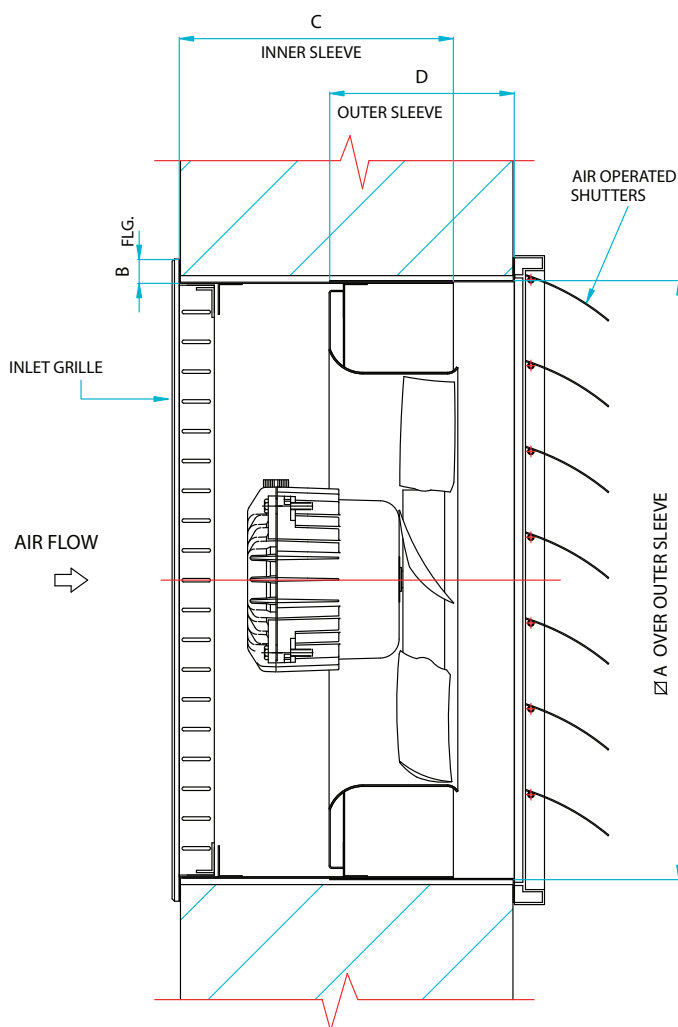
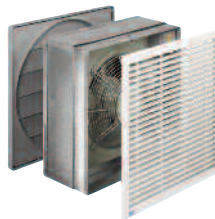
**Warranty** – Each SPE has a one year warranty.

### Typical Applications

Gymnasiums, sports halls, squash courts and other light commercial applications.

# Industrial Wall Fan SPE

## Dimensional Data



Product Code	A	B	C	D	Weight kg
SPE35	526	15	230	160	22
SPE40	586	15	230	160	29
SPE45	616	15	230	160	32

# Industrial Wall Fan SPE

## Performance, Electrical & Sound Data



Product Code	Fan Dia	Speed r/min	Wall Sleeve	Power Watts	m <sup>3</sup> /s	dB(A)@ 3m
SPE35	350	1320	526 x 526	90	0.77	53
SPE40	400	1300	586 x 586	250	1.25	56
SPE45	450	1300	616 x 616	250	1.55	59

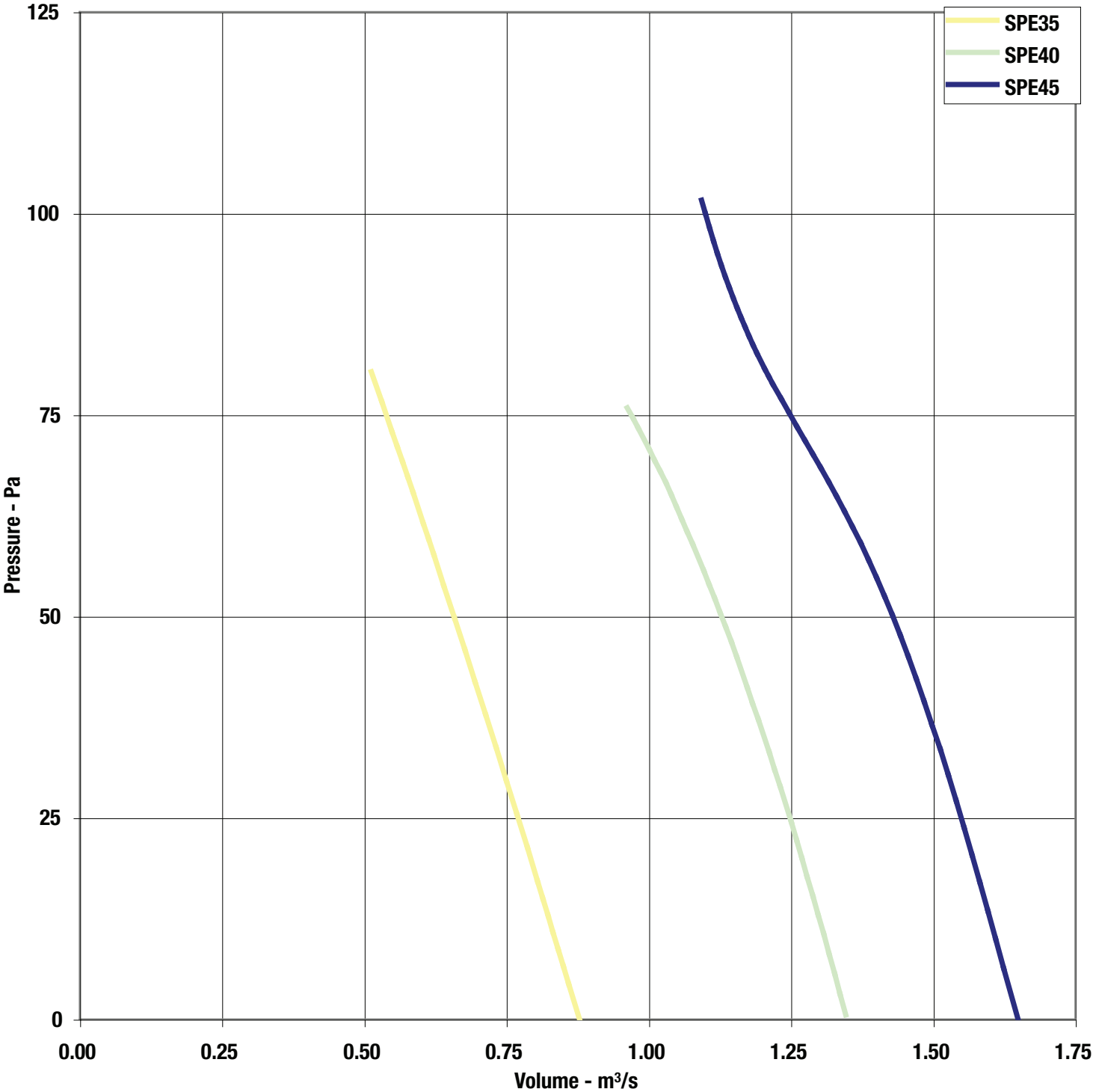
Sound levels are average spherical free field values for comparative purposes only.

# Industrial Wall Fan SPE

## Performance Curves



SPE





**Elta Fans Ltd - Applied Technology**

17 Barnes Wallis Road,  
Segensworth East Industrial Estate,  
Fareham, Hampshire, P015 5ST, United Kingdom.

**Visit:** [eltafans.com](http://eltafans.com)

**e-mail:** [mailbox@eltafans.co.uk](mailto:mailbox@eltafans.co.uk)

**Applied Technology:**

**Tel:** +44 (0) 1489 566500

**Fax:** +44 (0) 1489 566555

**Building Services:**

**Tel:** +44 (0) 1384 275800

**Fax:** +44 (0) 1384 275810

**Export:**

**Tel:** +44 (0) 1489 566500

**Fax:** +44 (0) 1489 566555